

Pillowcase

Finished Size: Standard 21" x 31"

Fits standard pillow size: 20" x 26"

Fabric Requirements

3/4 yard Fabric #1 for main pillowcase

1/8 yard Fabric #2 for narrow trim

1/3 yard Fabric #3 for hemmed edge

Cutting the Fabric

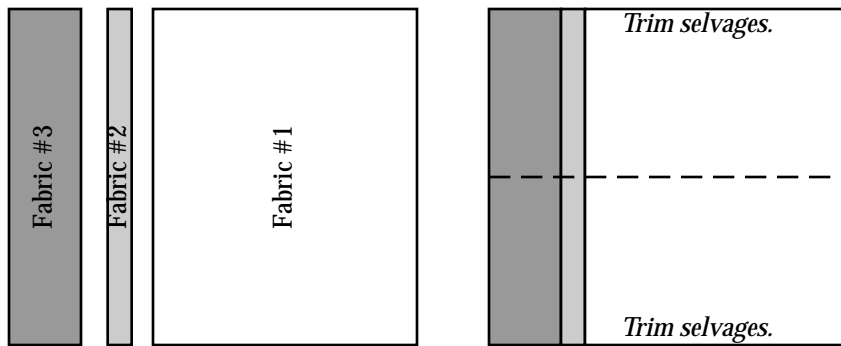
Fabric #1 for main pillowcase: 1 strip 26-1/2" x width of fabric

Fabric #2 for narrow trim: 1 strip 1-1/2" x width of fabric

Fabric #3 for hemmed edge: 1 strip 9-1/2" x width of fabric

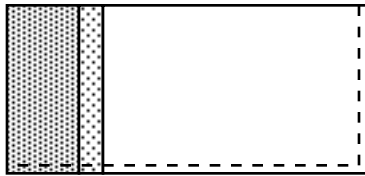
Assembly

1. Using a 1/4" seam allowance, stitch together fabric strips #1, #2, and #3. Press seams toward fabric #2. Trim selvage edges.



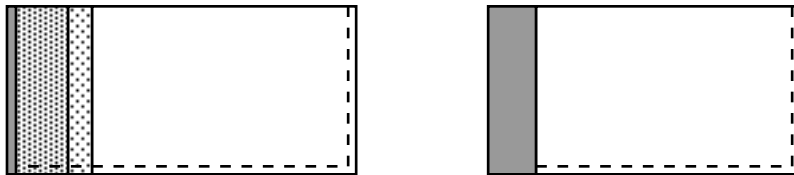
2. Fold in half (right sides together).

Using 1/4" seam allowance, stitch layers together along two sides. Serge or zig zag edges.



3. At open end, fold in 1/4" to wrong side; press.

Fold in again to wrong side, covering seams; press. Pin. Hand stitch hem.



4. Turn pillowcase right side out. Top stitch.

